



Bankstown Hospital School Annual School Report



2011



Our school at a glance

Students

Students of Bankstown Hospital School are patients of Bankstown Hospital Paediatric Ward. The students may be short or long term patients and may have an ongoing illness.

Staff

All staff has experience in working in a K-12 multi-age/multi-disciplinary classroom. All teaching staff meets the professional requirements for teaching in NSW public schools.

Significant programs and initiatives

The hospital school is unique in that it coordinates significant programs and initiatives in accordance with health system policy. The school has a holistic approach to educating each child and modifies learning programs to suit the individual student within the constraints of the illness or injury.

Student achievement in 2011

When NSW Board of Studies and NAPLAN exams are scheduled, students have access to sit these exams within the hospital school room. Results are sent directly to the student's home school. Students are offered preparation work in the lead up to these exams to assist home schools achieve the National Minimum Standards in Literacy and Numeracy.

Messages

Principal's message

Bankstown Hospital School provides continuity of education for hospitalised students. The school classroom is located in the children's ward of Bankstown Hospital. Our school is well resourced and offers Individual Education Programs (IEPs) for students from Early Stage 1 to Stage 6 in a bright and stimulating learning environment.

I certify that the information in this report is the result of a rigorous school self-evaluation process and is a balanced and genuine account of the

school's achievements and areas for development.

Rosalee Lamaro

Principal

Student representative's message

When I come to the Hospital School I learn Maths and English. I use the computer to play Maths games and research my assignments. My favourite subject is Visual Arts where I enjoy painting and drawing.

Johnny Year 8

School context

Student information

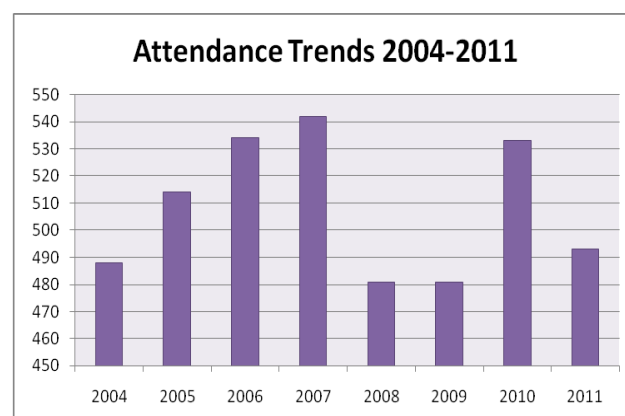
It is a requirement that the reporting of information for all students must be consistent with privacy and personal information policies.

Student enrolment profile

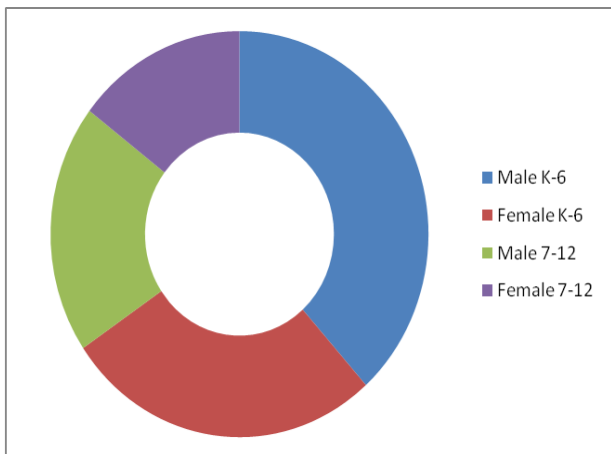
Students of Bankstown Hospital School are patients of Bankstown Hospital and may be short-term, long-term or recurrent admissions. The duration of attendance varied from .5 to 35 days. There are no permanent enrolments as all students are enrolled at their home schools (public or private).

Many cultural backgrounds are represented in our enrolments. Most students speak English but many families communicate at home in their parents' first language. The most common parent first language is Arabic followed by Vietnamese in the ratio 7:2.

Student attendance profile



The Hospital School accepts enrolments from both Private/Independent and Public School patients. Our total 2011 enrolments of 493 consists of 30% Private School students. The ratio of Male to Female students was 7:5; Primary to High School students was 2:1. Aboriginal and Torres Strait Islander students make up approximately 0.2% of our enrolments.



Management of non-attendance

Students are always encouraged to attend school in the Hospital School Room; however, due to their illness or injury some students will remain in their beds and are facilitated by School Staff at the bedside.

Structure of classes

The Hospital School runs Multi-Age Classes with Individual Education Plans for each student. Students who are not able to attend in the classroom are supplied with Educational services in their Ward Room.

Staff information

It is a requirement that the reporting of information for all staff must be consistent with privacy and personal information policies.

Staff establishment

Position	Number
Teaching Principal	1
Classroom Teacher	0.252
School Administrative & Support Staff	1.496
Total	2.748

Experienced staff works in a K-12 multi-age classroom. The school has two Full-Time positions and two Permanent Part-Time positions. The Permanent Part-Time Classroom Teacher position is filled by two Casual Teachers from two different KLAs (Key Learning Areas).

Staff retention

100% of our Teachers and SASS have been retained over the last 5 years.

Teacher qualifications

All teaching staff meets the professional requirements for teaching in NSW public schools.

Qualifications	% of staff
Degree or Diploma	100
Postgraduate	0



Visit to Ward by Guide Dogs Australia February 2011

Financial summary

This summary covers funds for operating costs and does not involve expenditure areas such as permanent salaries, building and major maintenance.

Date of financial summary:	30/11/2011
Income	\$
Balance brought forward	23582.41
Global funds	29570.34
Tied funds	6061.20
School & community sources	300.00
Interest	1376.31
Trust receipts	0.00
Canteen	0.00
Total income	60890.26
Expenditure	
Teaching & learning	
Key learning areas	7672.67
Excursions	0.00
Extracurricular dissections	0.00
Library	507.60
Training & development	9396.08
Tied funds	7442.45
Casual relief teachers	2214.27
Administration & office	10200.50
School-operated canteen	0.00
Utilities	12.54
Maintenance	0.00
Trust accounts	0.00
Capital programs	0.00
Total expenditure	37446.11
Balance carried forward	23444.15

Further details concerning the statement can be obtained by contacting the school.



Nurse taking temperature of student in the classroom August 2011

School performance 2011

Achievements

Academic

The Bankstown Hospital School has access to the National Assessment Program and receives a minimum number of papers across all years and subjects each year. This enables us to provide the opportunity for students who are well enough to complete their assessment in hospital. Results are sent directly to the students Home School and we do not receive any further information unless the student and/or their family contact us.

In the National Assessment Program, the results across the Years 3, 5, 7 and 9 literacy and numeracy assessments are reported on a scale from Band 1 to Band 10.

The achievement scale represents increasing levels of skills and understandings demonstrated in these assessments.

Yr 3: from Band 1 (lowest) to Band 6 (highest for Year 3)

Yr 5: from Band 3 (lowest) to Band 8 (highest for Year 5)

Yr 7: from Band 4 (lowest) to Band 9 (highest for Year 7)

Yr 9: from Band 5 (lowest) to Band 10 (highest for Year 9).

NAPLAN Year 3

Table 3.R5: Achievement of Year 3 Students in Reading, by Geolocation, by State and Territory, 2011.

State/ Territory	Geolocation	Mean scale score	Below national minimum standard (%)		At national minimum standard (%)	Above national minimum standard (%)				At or above national minimum standard (%)
			Exempt	Band 1	Band 2	Band 3	Band 4	Band 5	Band 6 and above	
NSW	<i>Metro</i>	429.0	1.6	2.6	8.2	15.8	21.3	21.8	28.6	95.7
	<i>Provincial</i>	405.2	1.5	4.7	12.1	19.5	22.8	19.7	19.7	93.8
	<i>Remote</i>	374.9	1.2	10.5	18.9	22.4	19.3	15.4	12.3	88.3
	<i>Very Remote</i>	348.7	0.0	23.5	19.0	18.8	14.6	10.6	13.5	76.5

Table 3.W5: Achievement of Year 3 Students in Persuasive Writing, by Geolocation, by State and Territory, 2011.

State/ Territory	Geolocation	Mean scale score	Below national minimum standard (%)		At national minimum standard (%)	Above national minimum standard (%)				At or above national minimum standard (%)
			Exempt	Band 1	Band 2	Band 3	Band 4	Band 5	Band 6 and above	
NSW	<i>Metro</i>	435.6	1.6	1.5	2.9	8.9	25.0	37.2	22.8	96.9
	<i>Provincial</i>	409.9	1.5	3.2	5.3	15.3	31.6	31.5	11.6	95.3
	<i>Remote</i>	382.1	1.2	8.8	10.3	20.9	29.7	20.2	8.9	90.0
	<i>Very Remote</i>	354.8	0.0	18.7	14.4	19.2	20.8	18.7	8.3	81.3

Table 3.S5: Achievement of Year 3 Students in Spelling, by Geolocation, by State and Territory, 2011.

State/ Territory	Geolocation	Mean scale score	Below national minimum standard (%)		At national minimum standard (%)	Above national minimum standard (%)				At or above national minimum standard (%)
			Exempt	Band 1	Band 2	Band 3	Band 4	Band 5	Band 6 and above	
NSW	<i>Metro</i>	428.6	1.6	2.7	6.9	14.2	23.3	24.8	26.5	95.7
	<i>Provincial</i>	395.4	1.5	6.1	11.7	19.9	25.4	21.0	14.3	92.4
	<i>Remote</i>	366.3	1.2	12.7	18.2	22.1	20.6	16.9	8.3	86.1
	<i>Very Remote</i>	349.9	0.0	21.3	15.4	21.7	17.9	16.3	7.3	78.7

Table 3.G5: Achievement of Year 3 Students in Grammar and Punctuation, by Geolocation, by State and Territory, 2011.

State/ Territory	Geolocation	Mean scale score	Below national minimum standard (%)		At national minimum standard (%)	Above national minimum standard (%)				At or above national minimum standard (%)
			Exempt	Band 1	Band 2	Band 3	Band 4	Band 5	Band 6 and above	
NSW	<i>Metro</i>	439.3	1.6	3.0	6.8	13.1	20.0	22.3	33.2	95.4
	<i>Provincial</i>	409.2	1.5	5.9	10.9	16.8	22.4	20.9	21.6	92.6
	<i>Remote</i>	377.7	1.2	11.0	17.8	20.6	19.7	15.1	14.5	87.8
	<i>Very Remote</i>	345.2	0.0	25.8	16.5	16.9	15.0	14.2	11.5	74.2

Table 3.N5: Achievement of Year 3 Students in Numeracy, by Geolocation, by State and Territory, 2011.

State/ Territory	Geolocation	Mean scale score	Below national minimum standard (%)		At national minimum standard (%)	Above national minimum standard (%)				At or above national minimum standard (%)
			Exempt	Band 1	Band 2	Band 3	Band 4	Band 5	Band 6 and above	
NSW	<i>Metro</i>	410.6	1.6	1.6	9.1	21.0	26.8	22.2	17.8	96.8
	<i>Provincial</i>	390.1	1.5	2.9	13.0	25.9	27.7	18.9	10.1	95.6
	<i>Remote</i>	367.8	1.2	6.3	22.1	27.8	22.5	12.2	7.9	92.5
	<i>Very Remote</i>	349.4	0.0	13.7	25.8	23.8	18.3	13.1	5.4	86.3

NAPLAN Year 5

Table 5.R5: Achievement of Year 5 Students in Reading, by Geolocation, by State and Territory, 2011.

State/ Territory	Geolocation	Mean scale score	Below national minimum standard (%)		At national minimum standard (%)	Above national minimum standard (%)				At or above national minimum standard (%)
			Exempt	Band 3 and below	Band 4	Band 5	Band 6	Band 7	Band 8 and above	
NSW	<i>Metro</i>	499.8	1.5	4.7	12.1	21.8	26.1	19.9	13.9	93.7
	<i>Provincial</i>	482.9	1.3	7.1	15.3	24.6	25.8	17.0	8.9	91.5
	<i>Remote</i>	452.3	0.7	18.7	22.0	21.5	18.7	11.7	6.7	80.6
	<i>Very Remote</i>	433.2	0.0	26.3	18.7	16.9	18.2	14.6	5.2	73.7

Table 5.W5: Achievement of Year 5 Students in Persuasive Writing, by Geolocation, by State and Territory, 2011.

State/ Territory	Geolocation	Mean scale score	Below national minimum standard (%)		At national minimum standard (%)	Above national minimum standard (%)				At or above national minimum standard (%)
			Exempt	Band 3 and below	Band 4	Band 5	Band 6	Band 7	Band 8 and above	
NSW	<i>Metro</i>	499.4	1.5	2.6	7.3	24.4	35.4	20.2	8.6	95.8
	<i>Provincial</i>	472.4	1.3	5.8	13.4	32.1	31.9	12.3	3.2	92.9
	<i>Remote</i>	442.5	0.5	16.4	19.7	31.0	22.4	8.1	1.8	83.1
	<i>Very Remote</i>	433.8	0.0	22.5	10.3	28.8	26.3	10.1	2.0	77.5

Table 5.S5: Achievement of Year 5 Students in Spelling, by Geolocation, by State and Territory, 2011.

State/ Territory	Geolocation	Mean scale score	Below national minimum standard (%)		At national minimum standard (%)	Above national minimum standard (%)				At or above national minimum standard (%)
			Exempt	Band 3 and below	Band 4	Band 5	Band 6	Band 7	Band 8 and above	
NSW	<i>Metro</i>	507.0	1.5	3.5	8.7	20.5	29.1	22.8	14.0	95.0
	<i>Provincial</i>	475.2	1.3	8.0	14.6	27.0	27.9	15.7	5.4	90.7
	<i>Remote</i>	446.6	0.5	21.0	19.5	21.6	21.7	10.7	5.0	78.5
	<i>Very Remote</i>	451.9	0.0	18.0	17.8	21.4	24.1	12.8	5.8	82.0

Table 5.G5: Achievement of Year 5 Students in Grammar and Punctuation, by Geolocation, by State and Territory, 2011.

State/ Territory	Geolocation	Mean scale score	Below national minimum standard (%)		At national minimum standard (%)	Above national minimum standard (%)				At or above national minimum standard (%)
			Exempt	Band 3 and below		Band 4	Band 5	Band 6	Band 7	
NSW	<i>Metro</i>	516.3	1.5	4.0	9.3	18.0	24.6	22.4	20.3	94.5
	<i>Provincial</i>	489.1	1.3	7.5	13.1	22.4	26.0	18.3	11.4	91.2
	<i>Remote</i>	446.6	0.5	23.4	17.8	22.2	17.6	11.1	7.4	76.1
	<i>Very Remote</i>	435.3	0.0	24.0	20.9	16.0	15.9	17.1	6.1	76.0

Table 5.N5: Achievement of Year 5 Students in Numeracy, by Geolocation, by State and Territory, 2011.

State/ Territory	Geolocation	Mean scale score	Below national minimum standard (%)		At national minimum standard (%)	Above national minimum standard (%)				At or above national minimum standard (%)
			Exempt	Band 3 and below		Band 4	Band 5	Band 6	Band 7	
NSW	<i>Metro</i>	505.8	1.5	2.6	10.6	23.4	27.6	19.2	15.1	95.9
	<i>Provincial</i>	480.2	1.3	4.6	15.2	29.2	28.3	15.3	6.1	94.0
	<i>Remote</i>	452.7	0.5	15.2	21.3	27.6	20.9	10.0	4.6	84.3
	<i>Very Remote</i>	429.9	0.0	24.5	19.5	24.7	19.6	9.5	2.2	75.5

NAPLAN Year 7

Table 7.R5: Achievement of Year 7 Students in Reading, by Geolocation, by State and Territory, 2011.

State/ Territory	Geolocation	Mean scale score	Below national minimum standard (%)		At national minimum standard (%)	Above national minimum standard (%)				At or above national minimum standard (%)
			Exempt	Band 4 and below		Band 5	Band 6	Band 7	Band 8	
NSW	<i>Metro</i>	547.8	1.3	3.3	13.7	23.8	26.7	19.6	11.6	95.4
	<i>Provincial</i>	531.2	1.1	5.0	17.7	26.6	27.1	15.9	6.6	93.9
	<i>Remote</i>	489.7	1.2	18.8	29.3	21.9	17.8	8.5	2.5	80.0
	<i>Very Remote</i>	497.8	0.0	20.0	26.6	19.3	14.8	11.8	7.5	80.0

Table 7.W5: Achievement of Year 7 Students in Persuasive Writing, by Geolocation, by State and Territory, 2011.

State/ Territory	Geolocation	Mean scale score	Below national minimum standard (%)		At national minimum standard (%)	Above national minimum standard (%)				At or above national minimum standard (%)
			Exempt	Band 4 and below		Band 5	Band 6	Band 7	Band 8	
NSW	<i>Metro</i>	535.4	1.3	5.3	13.8	28.8	26.7	15.6	8.6	93.5
	<i>Provincial</i>	504.6	1.1	10.6	21.5	33.1	21.5	9.0	3.2	88.2
	<i>Remote</i>	455.1	1.2	32.2	24.1	27.7	10.8	3.4	0.6	66.5
	<i>Very Remote</i>	474.7	0.0	30.4	24.0	15.1	14.1	9.9	6.6	69.6

Table 7.S5: Achievement of Year 7 Students in Spelling, by Geolocation, by State and Territory, 2011.

State/ Territory	Geolocation	Mean scale score	Below national minimum standard (%)		At national minimum standard (%)	Above national minimum standard (%)				At or above national minimum standard (%)
			Exempt	Band 4 and below		Band 5	Band 6	Band 7	Band 8	
NSW	<i>Metro</i>	554.9	1.3	3.8	9.8	21.1	29.7	21.9	12.3	94.9
	<i>Provincial</i>	526.0	1.1	8.0	15.1	27.0	28.4	15.7	4.6	90.9
	<i>Remote</i>	492.8	1.2	20.9	20.6	24.0	22.4	8.6	2.1	77.8
	<i>Very Remote</i>	504.9	0.0	20.5	14.8	24.2	24.9	12.0	3.5	79.5

Table 7.G5: Achievement of Year 7 Students in Grammar and Punctuation, by Geolocation, by State and Territory, 2011.

State/ Territory	Geolocation	Mean scale score	Below national minimum standard (%)		At national minimum standard (%)	Above national minimum standard (%)				At or above national minimum standard (%)
			Exempt	Band 4 and below		Band 5	Band 6	Band 7	Band 8	
NSW	<i>Metro</i>	543.1	1.3	4.5	13.3	24.9	27.3	18.8	9.9	94.2
	<i>Provincial</i>	522.1	1.1	7.5	17.6	28.8	26.4	14.2	4.3	91.3
	<i>Remote</i>	472.0	1.2	31.2	22.4	24.4	13.0	6.7	1.2	67.6
	<i>Very Remote</i>	481.7	0.0	30.1	20.9	21.6	13.4	9.2	4.7	69.9

Table 7.N5: Achievement of Year 7 Students in Numeracy, by Geolocation, by State and Territory, 2011.

State/ Territory	Geolocation	Mean scale score	Below national minimum standard (%)		At national minimum standard (%)	Above national minimum standard (%)				At or above national minimum standard (%)
			Exempt	Band 4 and below		Band 5	Band 6	Band 7	Band 8	
NSW	<i>Metro</i>	555.6	1.3	3.7	13.6	22.9	23.7	17.5	17.2	95.0
	<i>Provincial</i>	528.3	1.1	6.1	18.4	27.4	25.2	14.5	7.3	92.8
	<i>Remote</i>	485.2	1.2	21.4	30.5	21.5	14.9	7.2	3.4	77.4
	<i>Very Remote</i>	480.2	0.0	28.5	24.2	20.0	13.9	8.5	4.9	71.5

NAPLAN Year 9

Table 9.R5: Achievement of Year 9 Students in Reading, by Geolocation, by State and Territory, 2011.

State/ Territory	Geolocation	Mean scale score	Below national minimum standard (%)		At national minimum standard (%)	Above national minimum standard (%)				At or above national minimum standard (%)
			Exempt	Band 5 and below		Band 6	Band 7	Band 8	Band 9	
NSW	<i>Metro</i>	586.4	1.2	5.4	16.1	25.7	26.8	17.3	7.4	93.4
	<i>Provincial</i>	573.3	1.0	7.1	19.3	28.3	26.3	13.8	4.2	91.9
	<i>Remote</i>	531.7	1.1	20.2	28.4	29.0	16.0	4.9	0.4	78.7
	<i>Very Remote</i>	517.5	1.5	33.4	17.6	23.0	16.1	7.5	0.9	65.1

Table 9.W5: Achievement of Year 9 Students in Persuasive Writing, by Geolocation, by State and Territory, 2011.

State/ Territory	Geolocation	Mean scale score	Below national minimum standard (%)		At national minimum standard (%)	Above national minimum standard (%)				At or above national minimum standard (%)
			Exempt	Band 5 and below	Band 6	Band 7	Band 8	Band 9	Band 10	
NSW	<i>Metro</i>	571.5	1.2	11.5	19.2	24.0	21.4	14.0	8.6	87.3
	<i>Provincial</i>	537.6	1.0	20.7	25.4	24.5	16.7	8.3	3.4	78.3
	<i>Remote</i>	479.4	1.1	47.7	23.9	16.9	8.7	1.6	0.2	51.2
	<i>Very Remote</i>	474.3	1.5	50.4	17.3	16.4	10.4	2.4	1.5	48.1

Table 9.S5: Achievement of Year 9 Students in Spelling, by Geolocation, by State and Territory, 2011.

State/ Territory	Geolocation	Mean scale score	Below national minimum standard (%)		At national minimum standard (%)	Above national minimum standard (%)				At or above national minimum standard (%)
			Exempt	Band 5 and below	Band 6	Band 7	Band 8	Band 9	Band 10	
NSW	<i>Metro</i>	596.7	1.2	5.4	12.3	23.5	27.2	19.8	10.7	93.4
	<i>Provincial</i>	565.8	1.0	10.8	18.7	27.9	25.1	12.8	3.7	88.2
	<i>Remote</i>	528.9	1.1	24.6	24.7	25.3	16.9	6.5	0.9	74.3
	<i>Very Remote</i>	516.1	1.5	26.3	25.7	25.4	14.9	5.4	0.9	72.2

Table 9.G5: Achievement of Year 9 Students in Grammar and Punctuation, by Geolocation, by State and Territory, 2011.

State/ Territory	Geolocation	Mean scale score	Below national minimum standard (%)		At national minimum standard (%)	Above national minimum standard (%)				At or above national minimum standard (%)
			Exempt	Band 5 and below	Band 6	Band 7	Band 8	Band 9	Band 10	
NSW	<i>Metro</i>	580.9	1.2	7.6	16.9	25.5	25.8	15.8	7.2	91.2
	<i>Provincial</i>	559.3	1.0	11.6	21.3	29.1	23.7	10.5	2.8	87.4
	<i>Remote</i>	508.5	1.1	32.8	27.8	25.3	10.7	1.8	0.4	66.0
	<i>Very Remote</i>	494.0	1.5	41.2	21.2	21.2	9.9	4.8	0.3	57.3

Table 9.N5: Achievement of Year 9 Students in Numeracy, by Geolocation, by State and Territory, 2011.

State/ Territory	Geolocation	Mean scale score	Below national minimum standard (%)		At national minimum standard (%)	Above national minimum standard (%)				At or above national minimum standard (%)
			Exempt	Band 5 and below	Band 6	Band 7	Band 8	Band 9	Band 10	
NSW	<i>Metro</i>	596.4	1.2	5.0	16.7	24.0	22.5	16.5	14.1	93.8
	<i>Provincial</i>	569.3	1.0	7.9	22.3	28.7	22.3	12.5	5.3	91.1
	<i>Remote</i>	520.3	1.5	24.2	33.7	24.9	11.1	3.7	0.9	74.3
	<i>Very Remote</i>	512.0	1.5	37.0	20.9	17.0	15.2	5.7	2.7	61.5

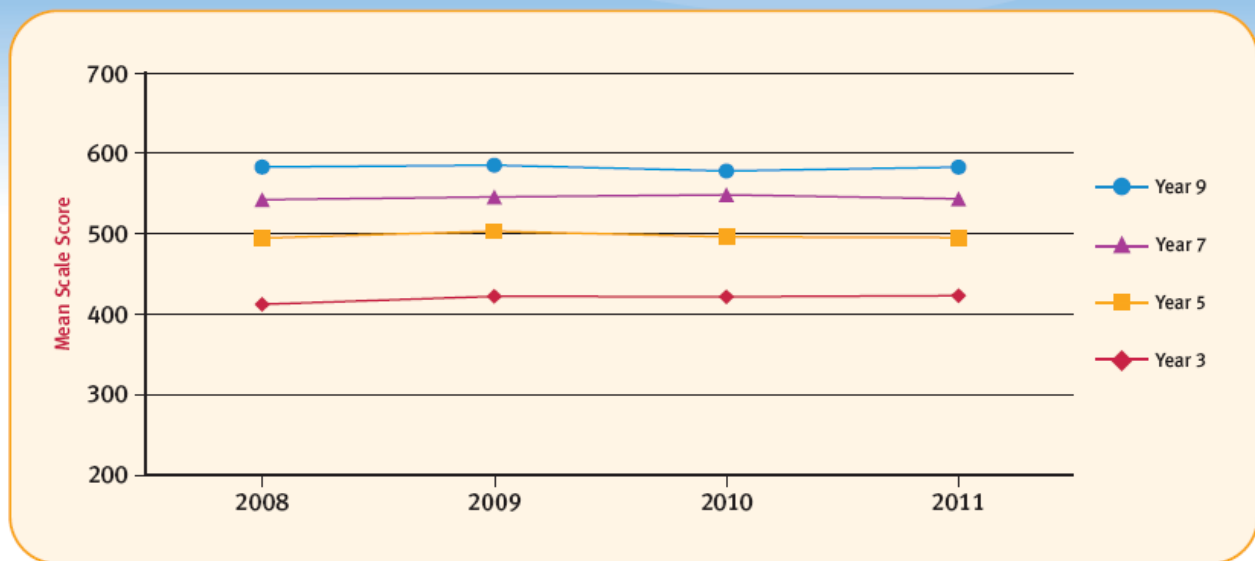
Minimum standards

The Commonwealth Government sets minimum standards for reading, writing, grammar and punctuation, spelling and numeracy for Years 3, 5, 7 and 9.

The performance of the students in our school in the National Assessment Program – Literacy and Numeracy is compared to these minimum standards. The percentages of our students achieving at or above these standards are reported in their Home School Annual School Report or you can view a summary report at <http://www.nap.edu.au/Documents/PDF/2011%20NAPLAN%20Summary%20Report.pdf>

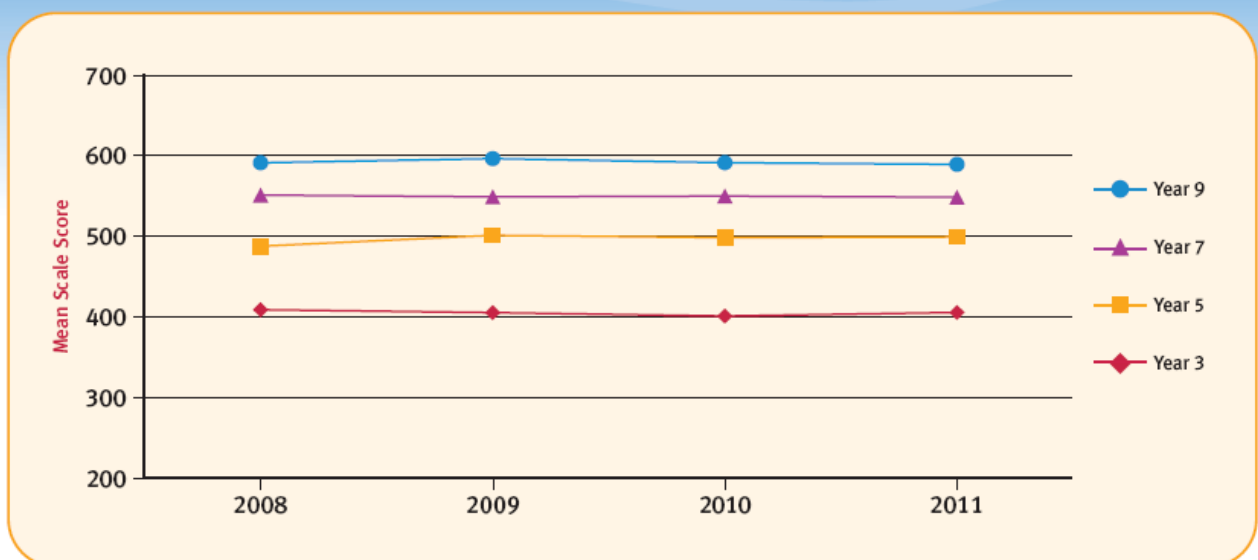
NAPLAN Reading

Figure TS.R14: Achievement of Students in Reading, NSW, 2008–2011.



NAPLAN Numeracy

Figure TS.N14: Achievement of Students in Numeracy, NSW, 2008–2011.



Significant programs and initiatives

Aboriginal education

Aboriginal and Torres Strait Islander students made up 0.2% of our 2011 enrolments. All students are offered Individual Educational Programs and work independently or in small groups within the classroom or their ward rooms. Reconciliation and NAIDOC week are recognised and celebrated through CAPA sessions. The school subscribes to the Koori Mail and features this resource in Visual Literacy activities.

Multicultural education

The school celebrates and recognises all cultural events celebrated by our students including: Chinese New Year, Easter (Orthodox and Christian), Saints Feasts Days, Diwali, Eid Ul-Fitr and Eid Hajj. There are many other festivals held around the Bankstown Community and the school helps promote these on our notice board located near the entrance to the Paediatric Ward. The Ward participated in the Annual Hospital Christmas Decoration competition in 2011.

Other programs

Our school encourages parents and family members to be a part of our school on a daily basis. Our school room displays posters that are Anti-bullying; encourage fairness; and promote diversity and respect. Due to the nature of our school all students and parents are informed upon enrolment that the wellbeing of the student is of primary importance whilst they are in hospital. All students are encouraged to show empathy and to act with compassion towards others who are also ill or injured.

Progress on 2011 targets

Target 1

Improved achievement in Writing results.

Our achievements include:

- 2011 NAPLAN results showing percentage of students at or above national minimum standards Metropolitan NSW compared to all NSW. Bankstown SEA results reflected in Metropolitan results.

Year	Metropolitan	NSW	2010 NSW
3	96.9	96.5	96.8
5	95.8	95	95.1
7	93.5	92.1	93.3
9	87.3	84.9	87.6

All 2011 results show higher percentage for NSW Metropolitan areas compared to all NSW. All results for Metropolitan are in line with 2010 results, however, 2011 NSW results are below 2010 results. Results decrease by approximately 10% from Year 3 to Year 9.

- Students in the Hospital School have participated in writing in all aspects of their education plans wherever possible. Writing activities include: reviews of books, Television shows, movies, experiments, Internet sites and educational games.

Target 2

Improved regional Numeracy results in NAPLAN years 3,5,7,9

Our achievements include:

- 2011 NAPLAN results showing percentage of students at or above national minimum standards Metropolitan NSW compared to all NSW. Bankstown SEA results reflected in Metropolitan results.

Year	Metropolitan	NSW	2010 NSW
3	96.8	96.5	95.0
5	95.9	95.4	94.6
7	95.0	94.4	94.9
9	93.8	93.0	93.1

All 2011 results show higher percentage for NSW Metropolitan areas compared to all NSW. Both results for NSW 2011 are above comparative 2010 results for Year 3 and Year 5. Only 2011 Metropolitan results are above 2010 NSW for Year 7 and Year 9. Results

decrease by approximately 3% from Year 3 to Year 9.

- Students in the Hospital School complete stage appropriate Numeracy tasks every day during session 2. Teachers encourage participation in each session and observe the level of each student's engagement in our day book. Use of ICT in Numeracy sessions has increased the students' level of engagement and knowledge integration.

Target 3

Positive student/parent/school partnerships

Our achievements include:

- Improvement in communication services between Hospital and Home School in regards to the students' wellbeing;
- Improvements in advising parents on who to contact in regards to their child's ongoing education plan;
- Positive interactions within all areas of the Hospital School Community.

Key evaluations

It is a requirement for all NSW public schools to conduct at least two annual evaluations – one related to educational and management practice and the other related to curriculum. In 2011 our school carried out evaluations of Teaching and Learning; and English, Mathematics, PD/H/PE, Languages.

Educational and management practice

Teaching and Learning

Background

The school has used the School Map best practices survey for Teaching and Learning.

Findings and conclusions

- ❖ Teaching survey responses indicated: 22% Almost Always, 78% Usually.
 - Areas of strength include: providing students with a relevant curriculum; teaching programs that respond to students' interests, needs and abilities.
 - Areas for improvement include: clarifying intended learning outcomes and the purpose of learning for each student; and

assessment strategies are understood by students and parents.

- ❖ Learning survey responses indicated: 47% Almost Always, 47% Usually, 6% Sometimes.
 - Areas of strength include: students having access to guidance from other people than myself to assist their learning; staff sharing ideas and experiences with colleagues to improve teaching practice.
 - Areas for improvement include: students taking responsibility for their own learning; students trying to do things that are new and different; encouraging students to reflect on their learning and engage in self assessment.

Future directions

The staff will focus on providing a clear purpose for each activity. Assessment strategies will be outlined for each student and parent. Staff will encourage all students to take further responsibility for their learning, to try new things and to reflect and engage in self assessment where appropriate.



Projector displaying movie in school room for Visual Literacy session

Curriculum

English, Mathematics, PD/H/PE

Background

In the Hospital School we are required to teach all subjects from K-12. All teachers are from

different teaching backgrounds and we aim professional learning to cater for our changing needs. All teachers are given opportunities to attend Professional Learning outside their areas of strength. We also contact Curriculum Advisers and other local teachers with expertise in these subjects when extra assistance is required.

Findings and conclusions

The school used the Curriculum Evaluation Teacher Survey in regards to English, Mathematics, PD/H/PE and Languages. All staff felt that the Professional Learning provided by the school has extremely enhanced their ability to provide assistance to students in these curriculum areas.

Future directions

We will continue to seek collegial connections in local schools to tap into their expertise in specific Key Learning Areas. Professional Learning funds will be used to complement and further develop the broad range of staff teaching backgrounds.

Parent, student, and teacher satisfaction

In 2011 the school sought the opinions of parents, students and teachers about the school. These opinions were obtained by informal and formal discussions, and written surveys.

All responses concluded the Hospital School was an important part of the Paediatric Ward culture. The Hospital School Staff provide valuable insight into the wellbeing of each school age child.

Professional learning

All staff has been involved in training and development in 2011. The average expenditure on Teacher Professional Learning was \$584 per teacher.

The following list outlines other activities attended throughout the year by all members of staff (Teaching and SASS):

- Principal's meetings and conferences;
- Supervising New Scheme Teachers;
- Computer Co-ordinator Days;
- Alcohol Education;



Student and teacher during CAPA session

- NSW Hospital Schools SDD;
- Sydney Curriculum Leads;
- School-Link Conference;
- Cleaning Maintenance;
- Comprehension;
- HT Mathematics Conference;
- Post School Pathways;
- H.E.L.P conference;
- Analytical training;
- Accidental Counsellor;
- Autism;
- Mental Health;
- Smart Notebook User;
- SAMs conference;
- SLSO Development Day.

School planning 2012—2014

The school planning policy provides direction for the preparation and implementation of school plans including the identification of priority areas, intended outcomes and targets that are consistent with the NSW State Plan and the Department's planning documents.

School priority 1

Outcome for 2012–2014

Literacy and Numeracy

Increase Literacy and Numeracy achievement for all students in all Home School and metropolitan results.

2012 Targets to achieve this outcome include:

- 100% students improving their Reading results and demonstrating growth in 2012 NAPLAN for years 3,5,7,9 ;
- 100% students improving their Numeracy results and demonstrating growth in 2012 NAPLAN for years 3,5,7,9.

Strategies to achieve these targets include:

- All students Reading on a daily basis during session one for approximately 20 minutes. Promotion of the International Year of Reading website both verbally and on our school website.

<http://love2read2012.wordpress.com/>

- All students completing stage appropriate Numeracy work during session 1 or 2 each day. Tasks completed are to be noted in our day book for each student. A wide variety of resources should be offered to cater for the different learning styles of all students.

School priority 2

Outcome for 2012–2014

Student Engagement and Attainment

Enhance the Wellbeing of all students during and after Hospitalisation, and promoting the value of ongoing education.

2012 Targets to achieve this outcome include:

- 100% students feeling supported by all staff and participating in school activities during their stay in Hospital;
- 100% Stage 5 and 6 students choosing subjects and pathways that are guided by experienced staff.

Strategies to achieve these targets include:

- Provide opportunities for students to direct their own learning within the Hospital School setting;
- Professional Learning for School staff in post-school options for students within the local community.

About this report

In preparing this report, the self-evaluation committee has gathered information from evaluations conducted during the year and analysed other information about the school's practices and student learning outcomes. The self-evaluation committee and school planning committee have determined targets for the school's future development.

Rod Leonarder School Education Director

Naomi Ellis Nursing Unit Manager (2F)

Rosalee Lamaro Principal

Chris SLSO

Noeline SAM

Kim Casual Teacher

Josie Casual Teacher

School contact information

Bankstown Hospital School

Paediatric Ward 2F,

Gallipoli Street,

Bankstown 2200

Ph: 02 9722-8063

Fax: 02 9722-8068

Email: banksthos-s.school@det.nsw.edu.au

Web: www.banksthos-s.schools.nsw.edu.au

School Code: 5548

Parents can find out more information about Annual School Reports, how to interpret information in the reports and have the opportunity to provide feedback about these reports at:

<http://www.schools.nsw.edu.au/asr>